



# CARAMEL LASHES *Perfect*

Perfect for a softer look or a less intense finish

**26<sup>+</sup>** years

One Stop Beauty Accessory Supply

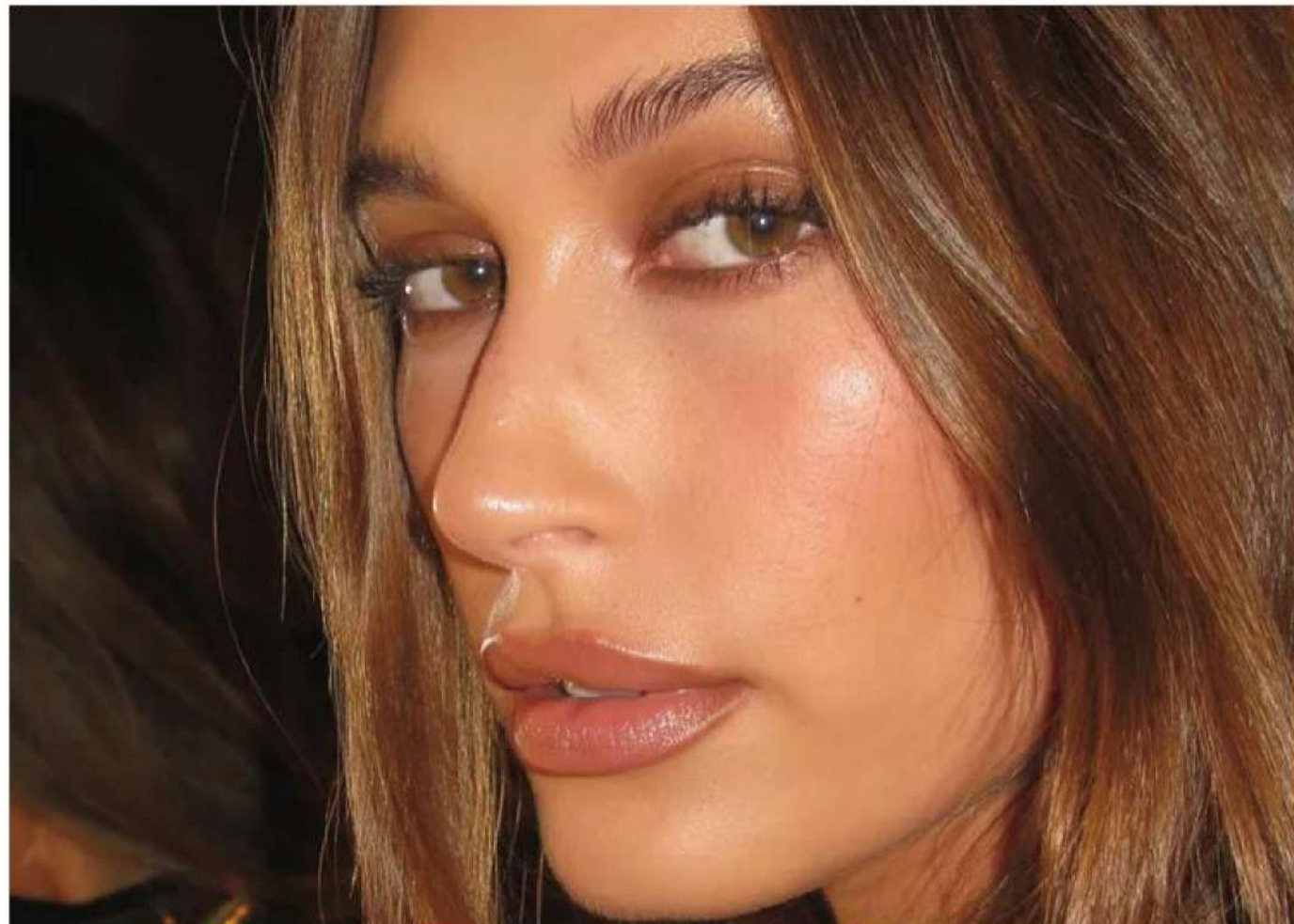


*New*

**BYRDIE**

## **Everyone's Switching to Brown Mascara This Fall: 18 Ways To Wear the Look**

This fall, brown mascara replaces black for a softer, cool-girl neutral glam.



[@HAILEYBIEBER/INSTAGRAM](https://www.instagram.com/haileybieber/)



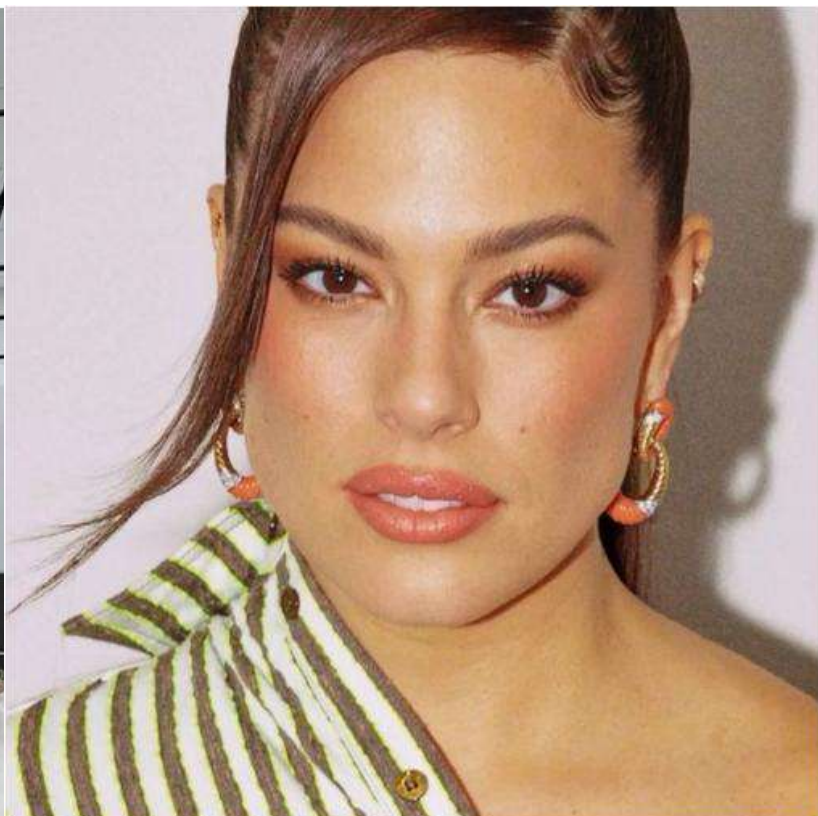
[@DAVIDRAZZANO](#) / INSTAGRAM

**Natural Beauty**  
Makeup looking ultra-natural



[@BRITTSULLY](#) / INSTAGRAM

**Soft Eyes**  
Soft makeup looks.



[@KALETETER](#) / INSTAGRAM

**Chocolate Shadow**  
Chocolate still adds definition but with a slightly gentler finish.



[@VINCENTOQUENDO](#) / INSTAGRAM

**Pop of Penny**  
Brown mascara complements vivid eyeliner without overpowering the look.



[@HUNGVANNGO](#) / INSTAGRAM

**Umber Lashes**  
Cool-toned brown mascaras, complementing any eyeshadow and liner tones.



[@NIKKI\\_MAKEUP](#) / INSTAGRAM

**Brown on Brown**  
brown mascara It's suitable for any makeup look

# Market Trend

## *High-end Brand*



## *Mid-range Brand*

T A T T I L A S H E S

# New Wet Lash-Chocolate



Wet lash look - Trend driven

- ✓ Available in Black and Chocolate
- Same style and length

**\$12.50**

Box Price

**\$25**

Retail

Wet Gossamer® Lash



CHOCOLATE  
GOSSAMER LASH  
COLLECTION

# New-Color Chocolate



- CHOCOLATE GOSSAMER LASH
- VELVET CHOCOLATE
- FLUFFY LITE CHOCOLATE
- FFS CHOCOLATE
- WET LASH CHOCOLATE



<https://www.lashify.com/search?options%5Bprefix%5D=last&page=2&q=CHOCOLATE+GOSSAMER+LASH&type=product>

## WING - NOGLUE LASHES

### SOFT BROWN PRE GLUED LASHES - LIMITED EDITION

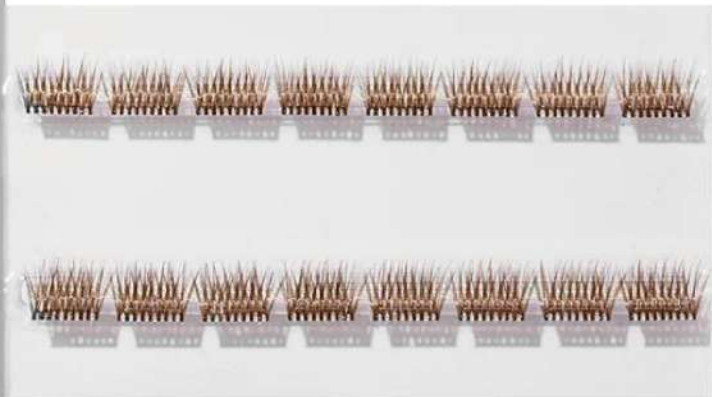
~~\$32.00~~ \$27.00 -16%

Tax included. Shipping calculated at checkout.



### DESIGNED WITH A WIDE BASE AND CLEAR BOND

- Soft & Lightweight: Ultra-fine fibres for a delicate, airy feel
- Wide Base & Clear Bond: Seamlessly blends into your lash line
- Flattering Curl: Lifts and opens the eyes effortlessly



## WING - OUTER CORNER LASH

### - NO GLUE LASHES

The Wing – Effortless Lift, Unmatched Ease  
DESIGNED TO ENHANCE THE OUTER CORNER  
OF YOUR EYE WITH A SLEEK, MODERN FLICK.



# New-Color Chocolate

# SILLY GEORGE

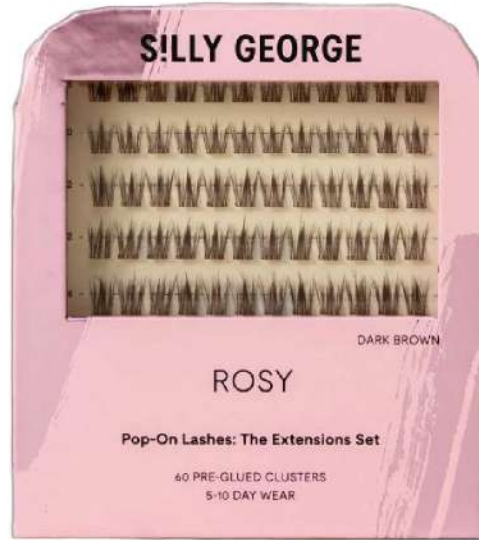
## SELECT COLOR

— Dark Brown

— Light Brown



\$43



# New Brown lash style

TATTI LASHES

## Pre Glued-Clusters



Chocolate  
1-Step Press™  
Add to bag \$16



**NATURAL**  
**— Brown Lashes**



M-A-C LASH / 33  
INGENUUE LASH \$16.00



M-A-C LASH / 36  
DREAMGIRL LASH



M-A-C LASH / 48  
SHOW-OFF LASH



# *Caramel* Lashes

Caramel colour for a softer, natural finish



# *Caramel* Lashes

The Perfect Lashes For Natural Glam



Ideal for naturally  
have a lighter or brown lash colour



# Strip Lashes

01



02



03



04



05



06



# Cluster Lashes

01



02



03



# More Option

04



05



06



# More Option

07



08



09

